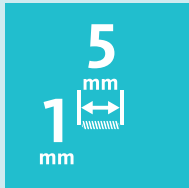


Sentimag[®] – Magseed[®]

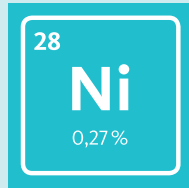
Perfect orientation
from placement to
detection



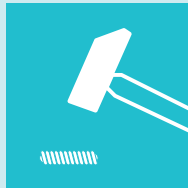
Key features of Magseed® magnetic marker system



Small size



Medical grade stainless steel/low nickel content



Robust



Non-radioactive



Bracketing: Seeds 20 mm apart or greater



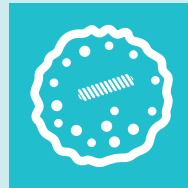
Improved scheduling



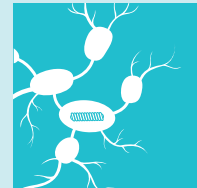
Long-term placement



Firmly implanted



Impalpable lesion localisation



Target lymph node biopsy



US visible



X-ray visible

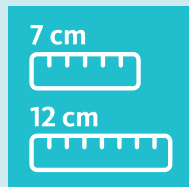


MR conditional (1.5/3.0T)

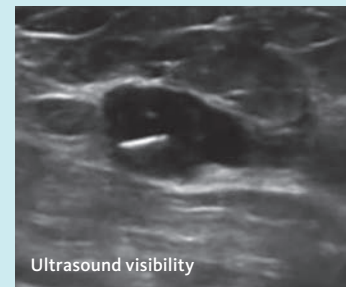
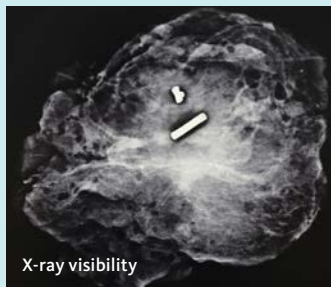
- MRI can be done immediately after placement
- Temperature rise of < 5.3°C after 15 min of continuous scanning



Small needle preloaded with Magseed®



Needles with 1 cm depth reference marks



- Needles: 7 cm (SM18-1-07) and 12 cm (SM18-1-12)
- The device has been designed for single use only
- Sterilised with ethylene oxide
- Magseed® is always reliably detectable with the Sentimag® probe
- Sentimag® and Magseed® are CE-marked and FDA-cleared for long-term soft tissue localisation

Endomag®, Sentimag® and Magseed® are registered European Union trade marks of Endomag Ltd · www.endomag.com
Magtrace® is a registered trade mark of Endomag Ltd in the United Kingdom www.endomag.com

Distributor EMEA: Sysmex Europe GmbH

Bornbarch 1, 22848 Norderstedt, Germany · Phone +49 40 52726-0 · Fax +49 40 52726-100 · oncology@sysmex-europe.com · www.sysmex-europe.com

Manufacturer: Endomag Ltd

The Jeffreys Building, St John's Innovation Park, Cowley Road, Cambridge CB4 0WS, United Kingdom

You will find your local Sysmex representative's address under www.sysmex-europe.com/contacts